

The image features a vibrant, candy-themed background. In the center is a large, blue, circular object resembling a lollipop or a giant piece of candy, with a yellow and green diamond-patterned center. The words "Sugar Frenzy" are written in a large, pink, bubbly, and slightly 3D font across the center of this circle. The background is a soft purple and pink gradient. To the left, there's a large, pink, ice cream cone-shaped structure with a brown base and a small lollipop. To the right, a large white ice cream cone with a red cherry on top and red sprinkles is visible. In the bottom right corner, there's a black diagonal banner containing the Triple Cherry logo and text.

Sugar Frenzy

3

TRIPLE CHERRY

Sugar Frenzy

In a dream world full of jelly beans and candies, there are giant monsters that love to feed on special candies.

Watch out for them if you don't want to end up inside her stomach! Although it might be a good place to win big prizes ...

FEATURES

- Candy Hook with powers: Stacked Wilds, RESPIN explosion, prizes...
 - Free Spins BONUS phase inside the monster
 - Avoid the Chili Hook if you won't leave Free Spins Bonus phase
-

- | | |
|--------------------|--------------------|
| • RTP: 95,22% | • BET LINES: 40 |
| • HIT RATE: 50,32% | • GEOMETRY: 5X5 |
| • VOLATILITY: 5/10 | • MAX WIN: x715,45 |



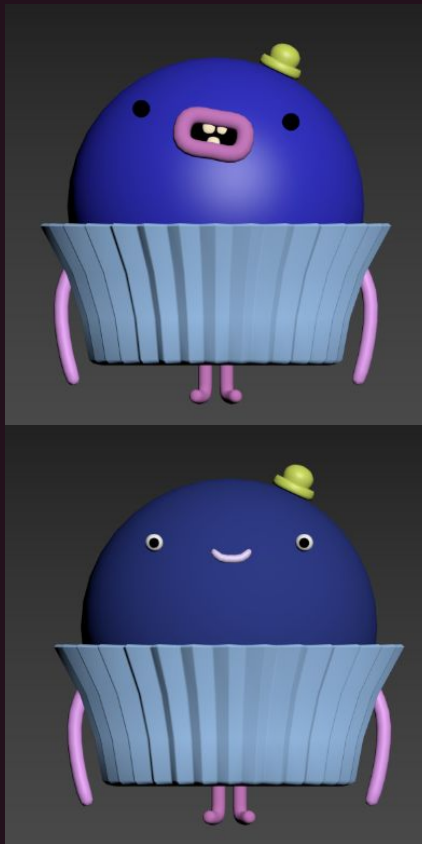
INSPIRATION



Concept Art



CONCEPT ART

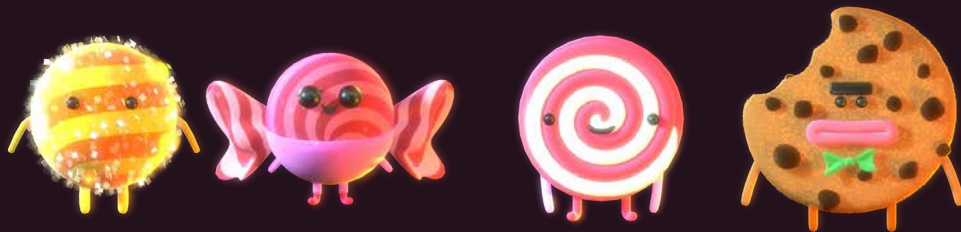


CONCEPT ART



CONCEPT ART

LOW VALUE



HIGH VALUE

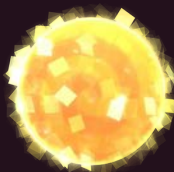
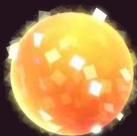


SPECIALS

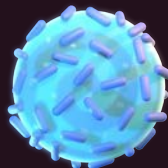


CONCEPT ART

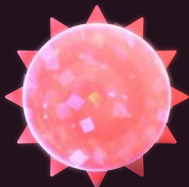
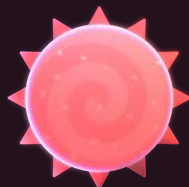
WILDs



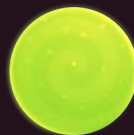
FreeSpins



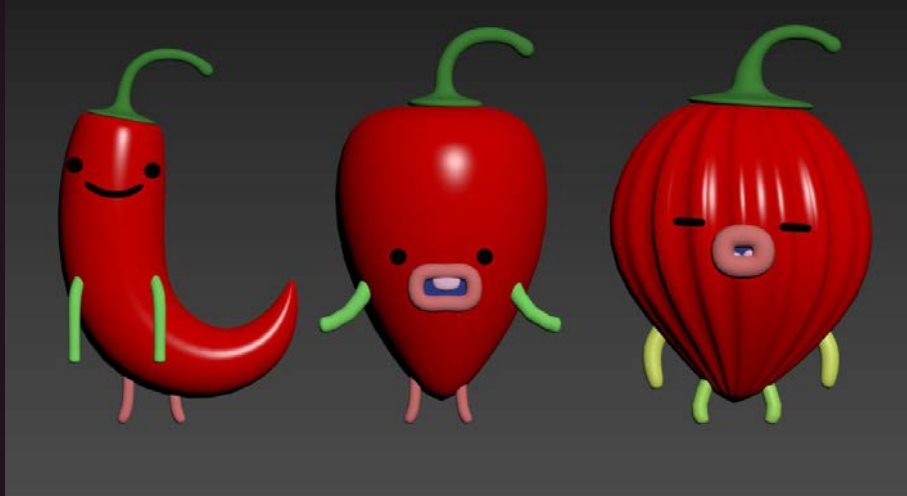
Explosión

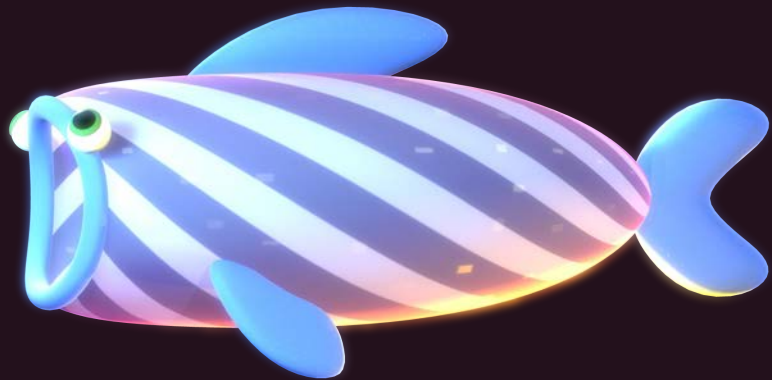


Premio



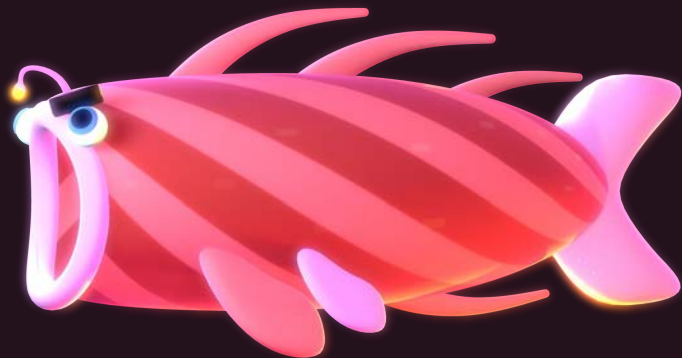
CONCEPT ART





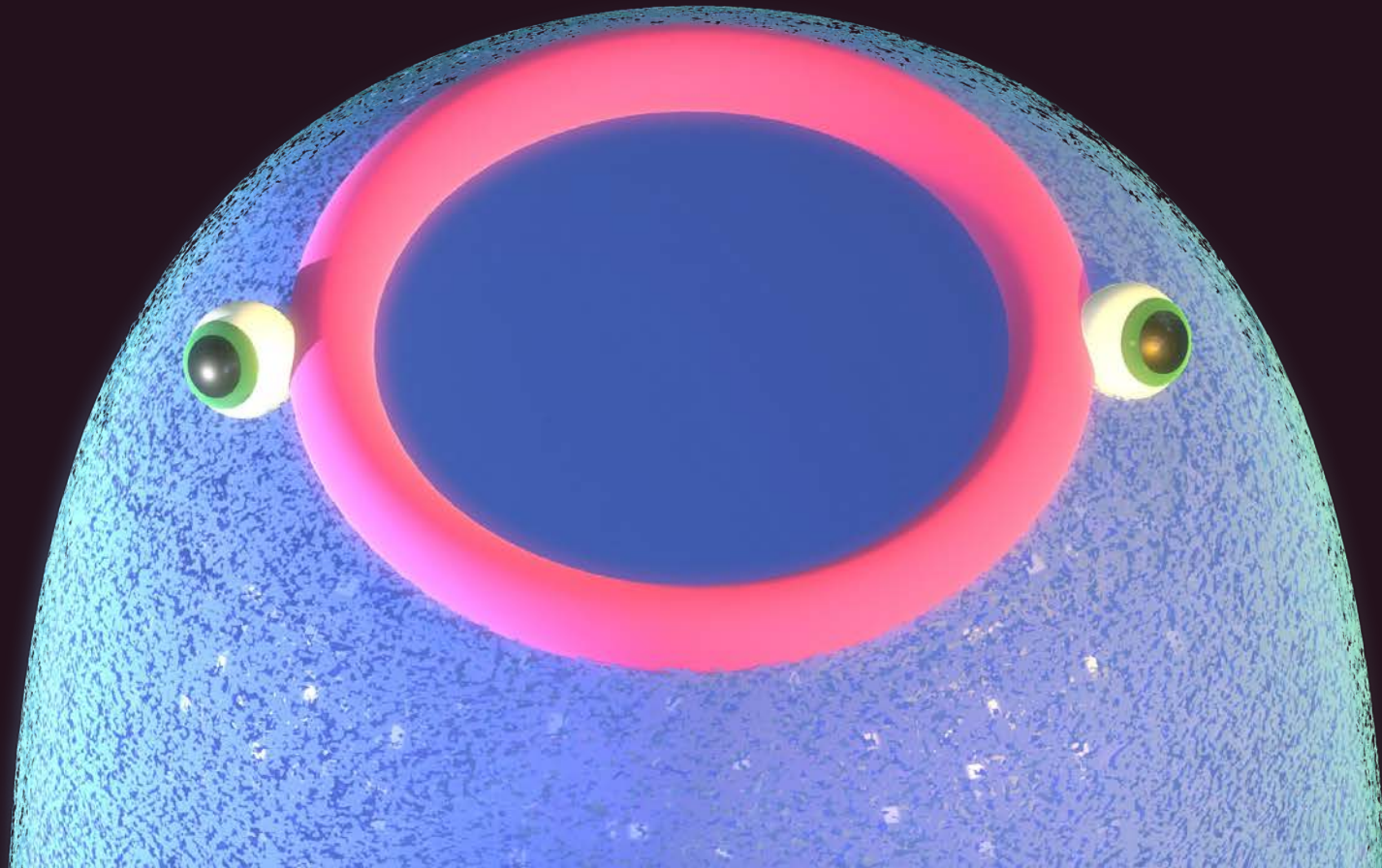
!SWEET WIN!

!FRENZY WIN!



!SUGARY WIN!

CONCEPT ART



CONCEPT ART



CONCEPT ART

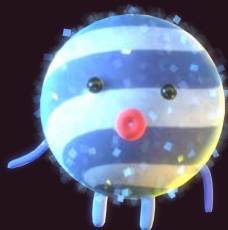


Arte Final



STANDARD SYMBOLS

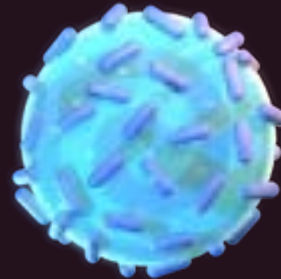
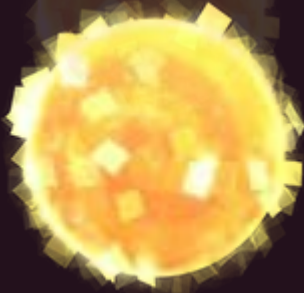
Low



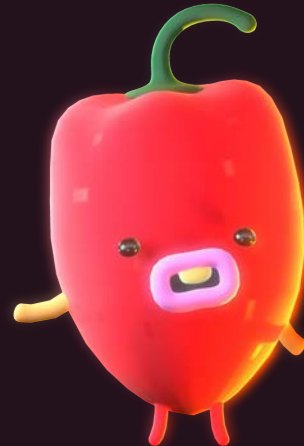
High



CANDY HOOK



CHILI HOOK



SPECIAL SYMBOLS



BONUS

WILD



BIG PRIZES



GAME BACKGROUNDS



GAME BACKGROUNDS



GAME BACKGROUNDS



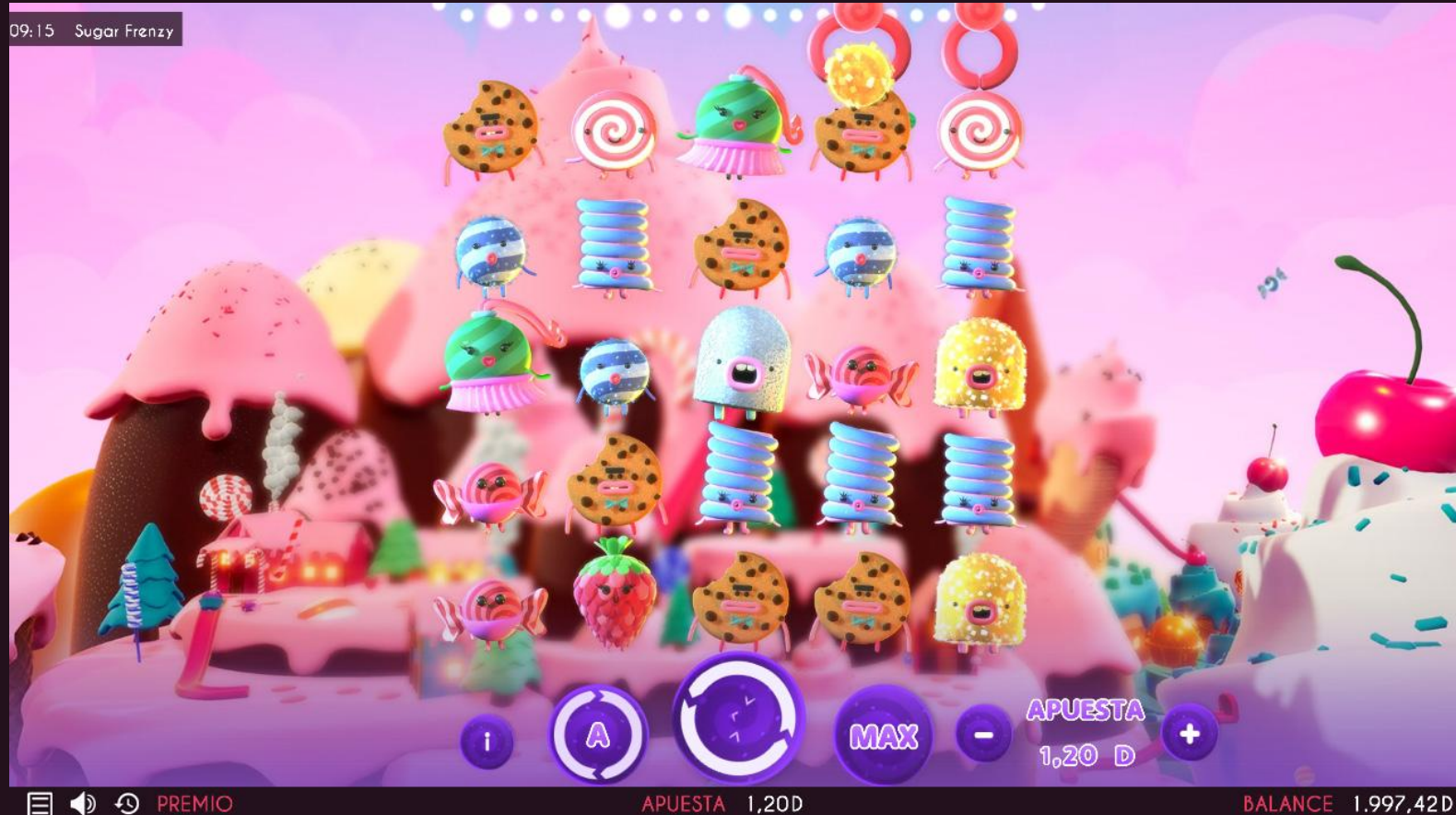
GAME BACKGROUNDS



Funciones



LOOK & FEEL



3D FULL VIDEO INTRODUCTION

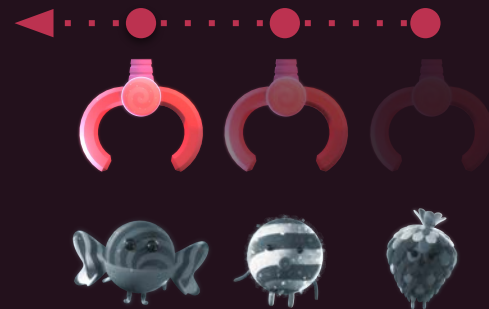


WHAT IS THE CANDY HOOK?

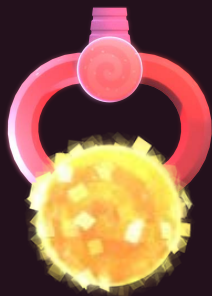
1 When SPIN, a hook may appear on the reel from the right



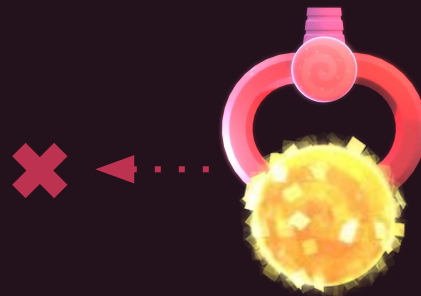
2 The hook moves one column to the left with each SPIN



3 Some hooks can carry a candy



4 Candy hooks progress is cleared by changing the bet when there are at the screen*



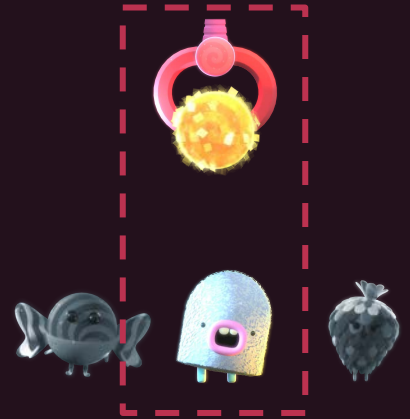
*The player is notified with a a popup

HOW WORKS THE CANDY HOOK?

- 1 A special symbol may appear on the reels: the gray jelly beans



- 2 There is a combination if a hook with a candy matches the column with a gray jelly bean



- 3 The hook drops the candy onto the gray jelly bean to grant a power

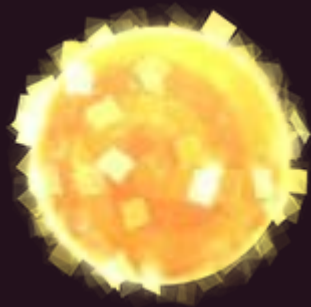


- 4 If the hook does not carry a candy, there is no combination with the gray jelly bean



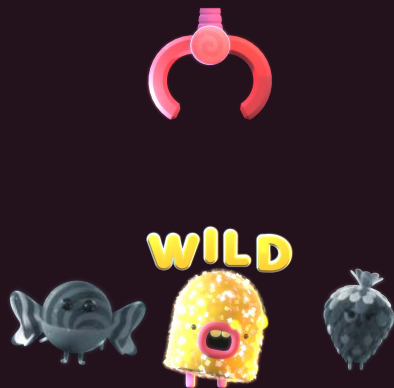
1

WILD candy
generates WILD
symbols



3

The gray jelly
bean is
transformed into
WILD



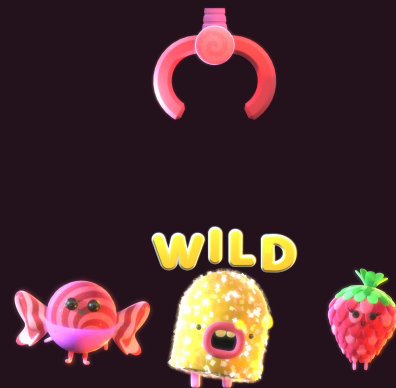
2

There is a
combination if a
hook with a candy
matches the
column with a
gray jelly bean



4

This action can
generate new
prize
combinations



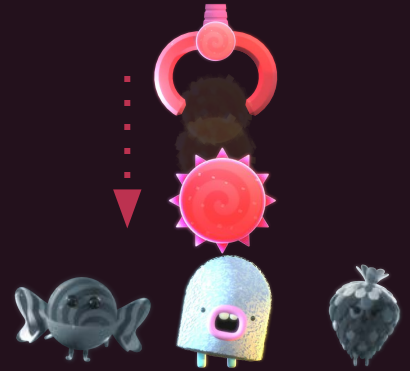
WILD CANDY

EXPLOSIVE CANDY

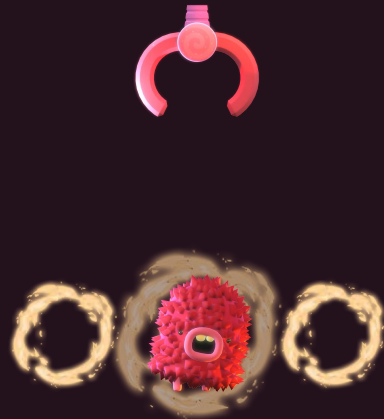
- 1 Explosive candy can make symbols explode



- 2 There is a combination if a hook with a candy matches the column with a gray jelly bean



- 3 The gray jelly bean is transformed and explodes symbols around it



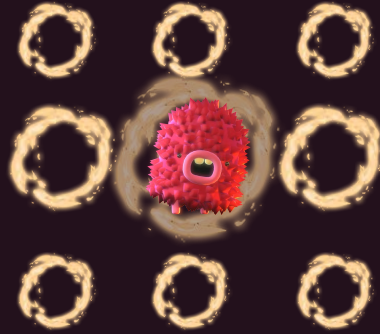
- 4 This causes new symbols to drop and being able to create new award lines



EXPLOSIVE CANDY - EXPLOSIONS

1

Square explosion



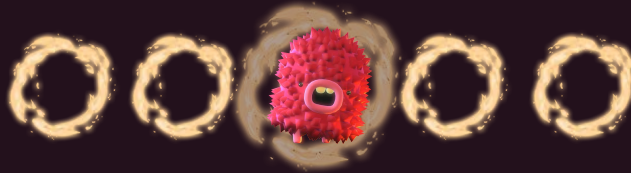
2

Vertical explosion



3

Horizontal explosion



PRIZE CANDY

- 1 Prize Candy offers a monetary prize



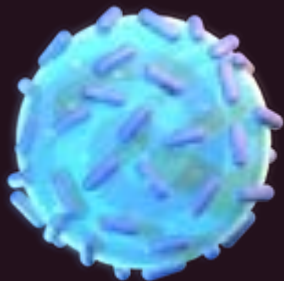
- 2 There is a combination if a hook with a candy matches the column with a gray jelly bean



- 3 The gray jelly bean eats the candy and awards a prize to the player



1 Bonus Candy
grant access to
Free Spins Bonus
phase



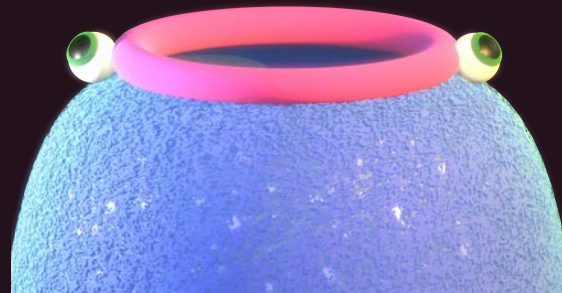
3 The gray jelly
bean transforms
into the BONUS
symbol



2 There is a
combination if a
hook with a candy
matches the
column with a
gray jelly bean



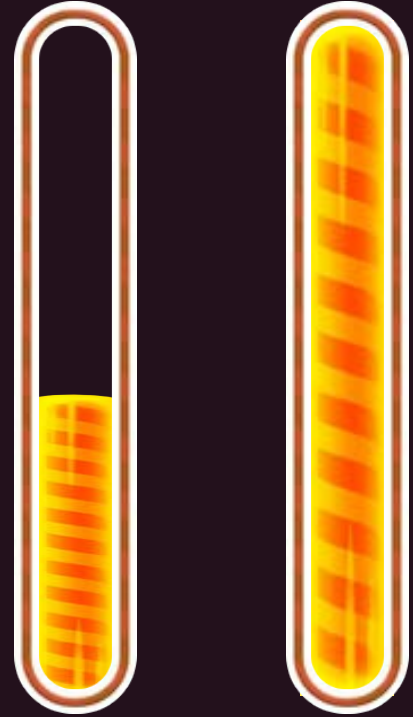
4 This gives access
to the Free Spins
Bonus Phase
inside the Giant
Monster



BONUS CANDY

FREE SPINS BONUS PHASE

1. It is accessed with unlimited Spins.
2. The phase ends when the progress bar is completed.
3. During this phase the chances of the appearance of candies increase.



CHILI

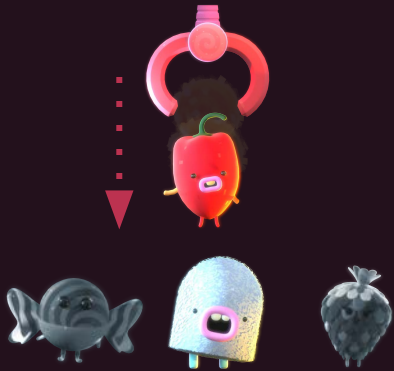
1

In the Free Spins Phase the hook can carry Chili



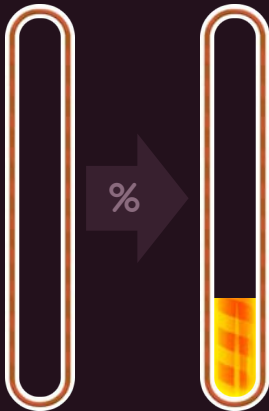
2

There is a combination if a hook with a candy matches the column with a gray jelly bean



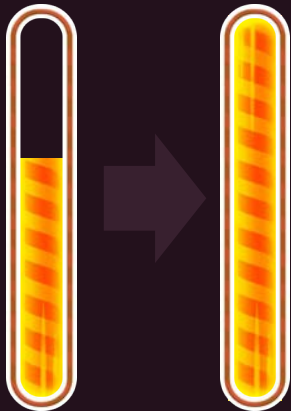
3

Each type of chili increases the progress bar by a different%.



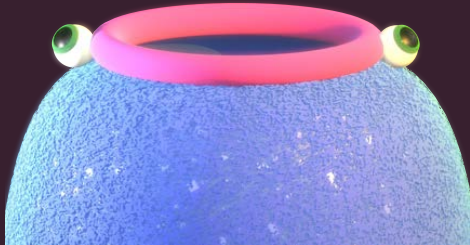
4

When the bar is full the Free Spins Phase ends



FASE DE TIRADAS GRATIS

1. The Free Spins Bonus phase is played inside the Giant Monster.
2. Upon exiting this phase we will visit a different scenario from the 3 available.





3
TRIPLE CHERRY

hello@3cherry.com

3cherry.com